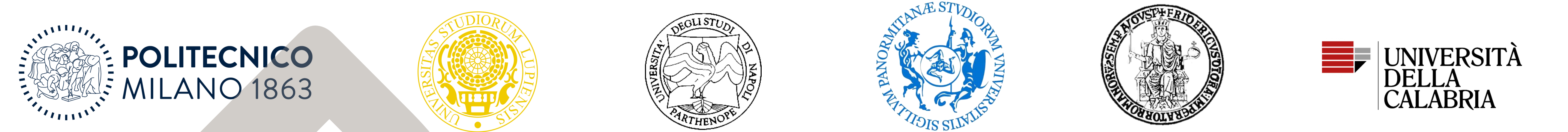


WP 14 - Contributi normativi relativi a Materiali Innovativi per Interventi su Costruzioni Esistenti

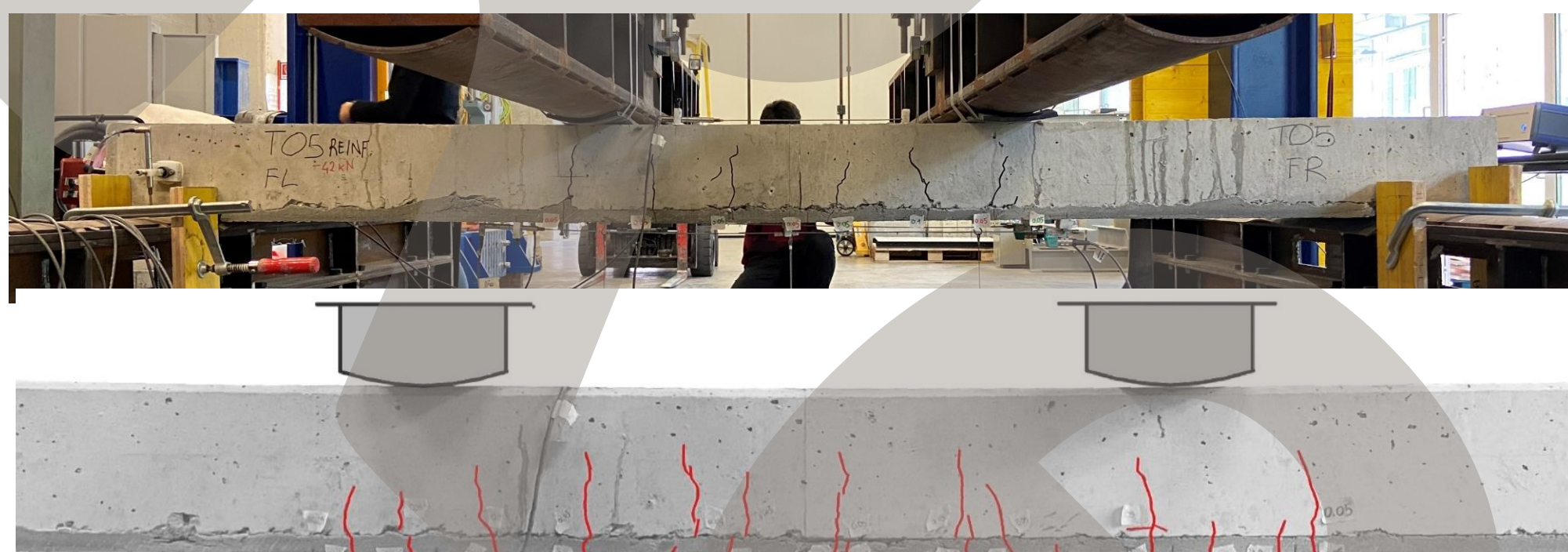
Task 14.1.1 – Interventi mediante compositi di tipo FRCM



Rinforzo a flessione di solette in c.a.

Marco Carlo Rampini, Giulio Zani, Matteo Colombo e Marco di Prisco

Prove di flessione 4 punti



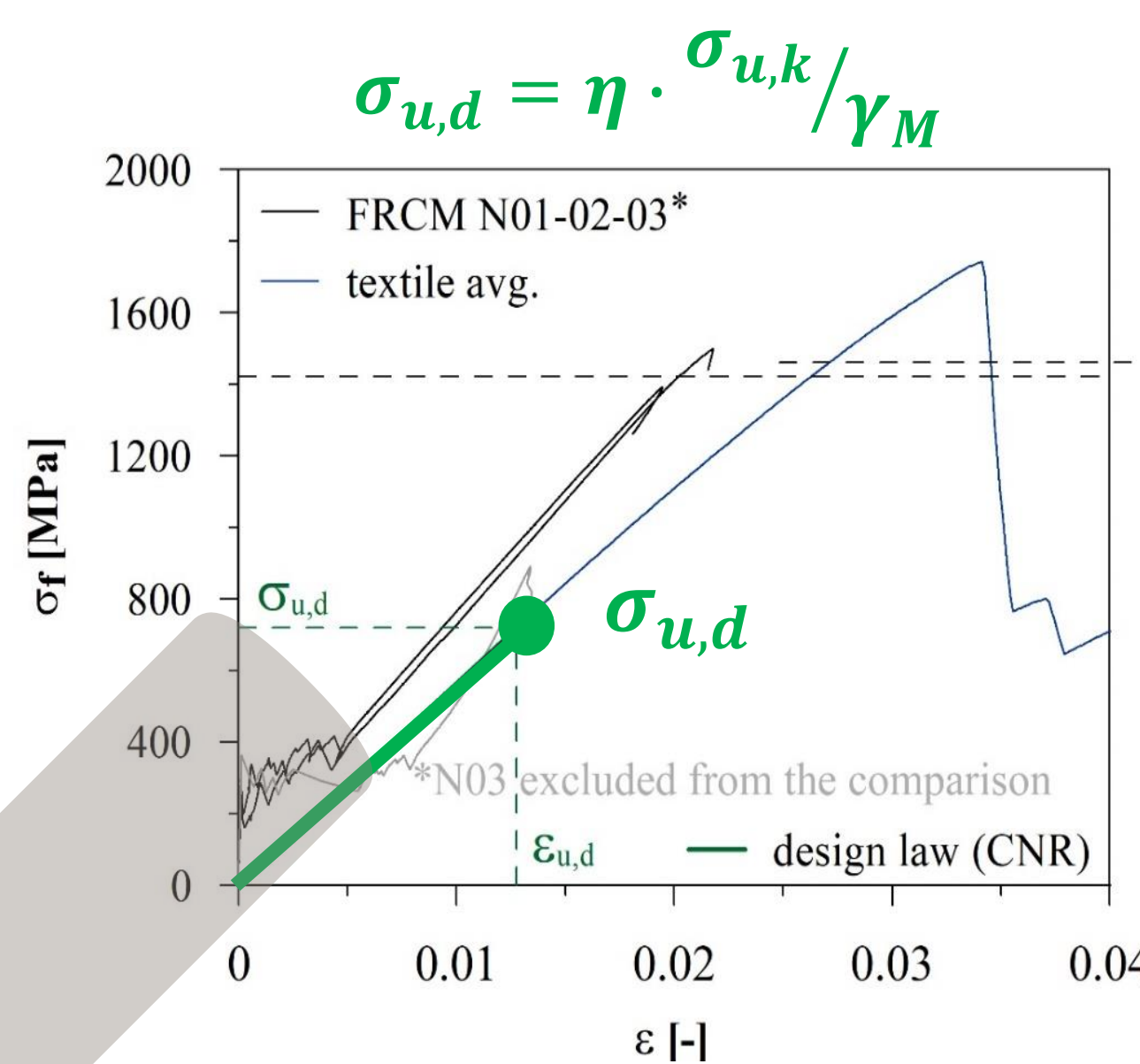
$S_{rm,exp} \cong 112 \text{ mm}$

EC2 – stima passo fessure c.a.

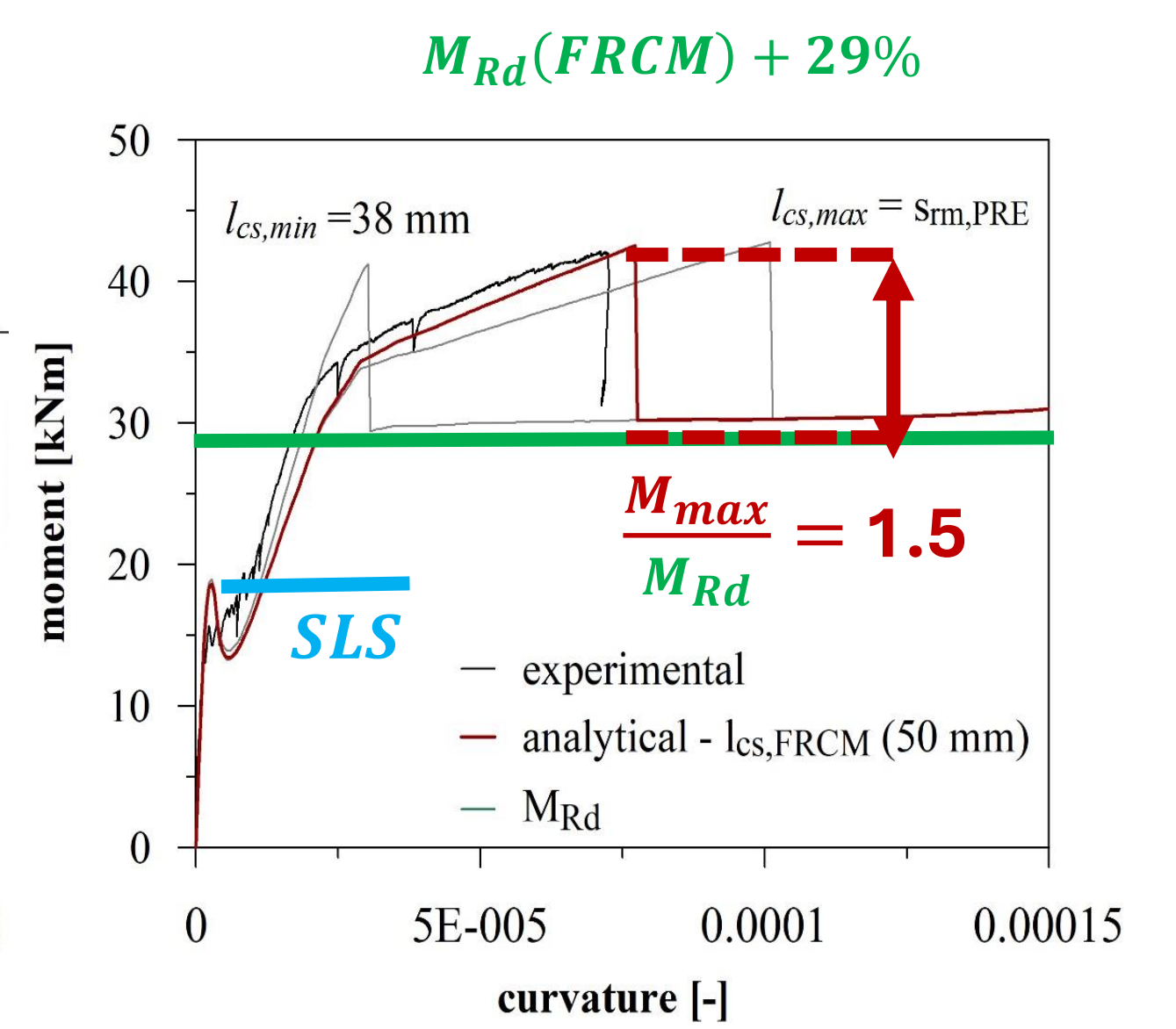
$$S_{rm,max} = k_3 c + k_1 k_2 k_4 \frac{\phi}{\rho_{p,eff}}$$

$$S_{rm,avg} = \frac{S_{rm,max}}{1.7}$$

Definizione legame (CNR DT-215)



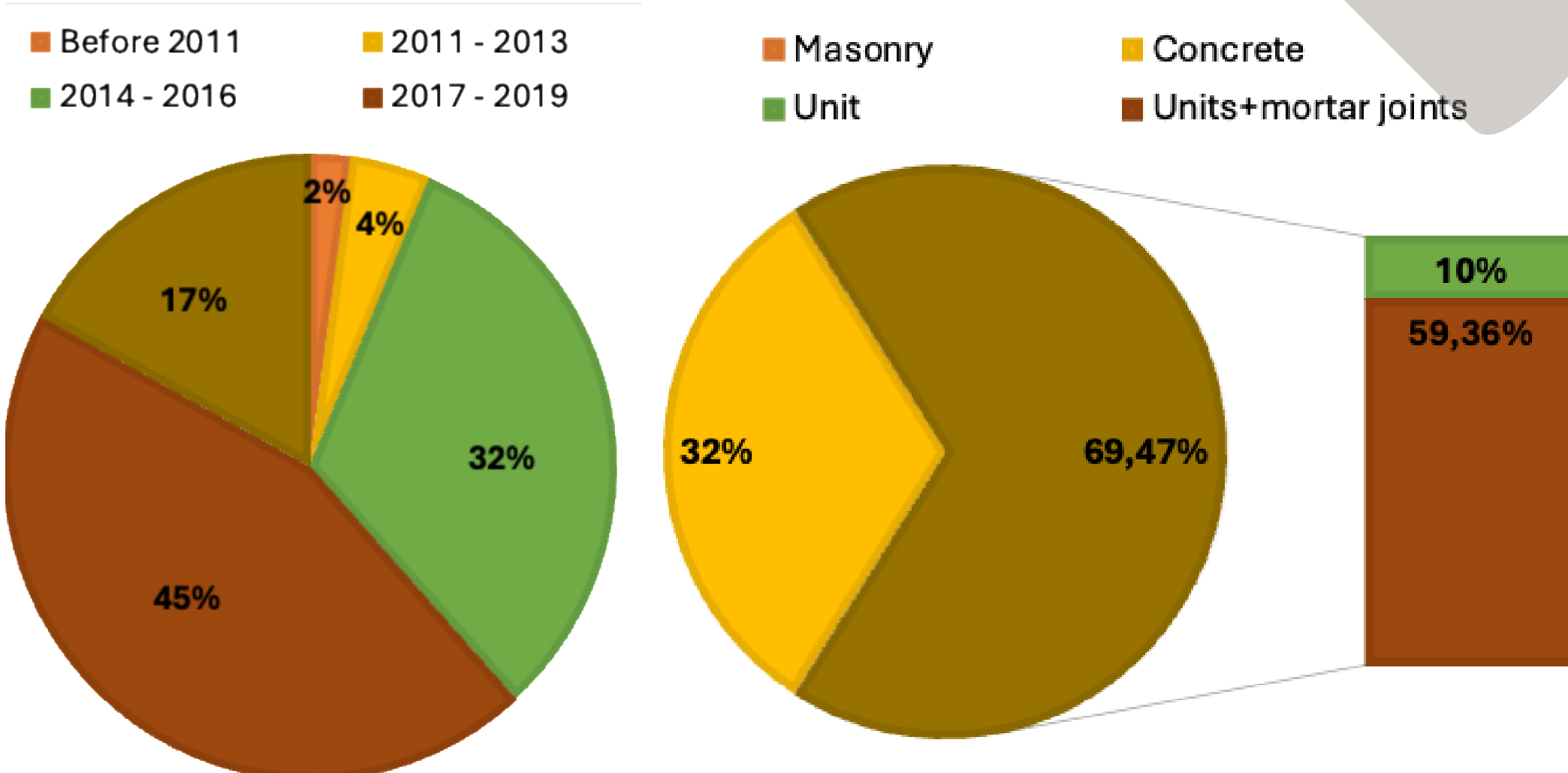
Stima risposta sperimentale e capacità ultima



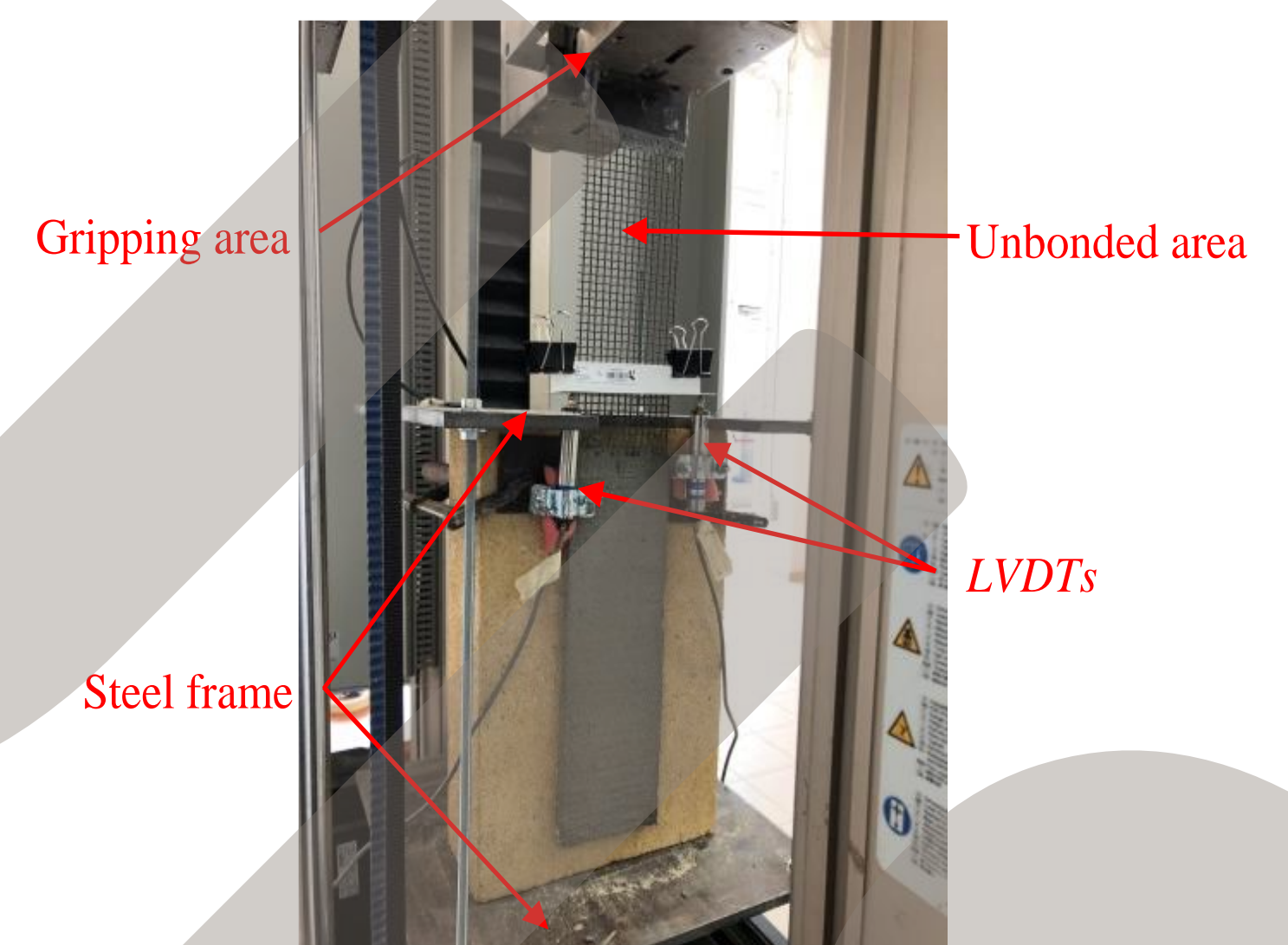
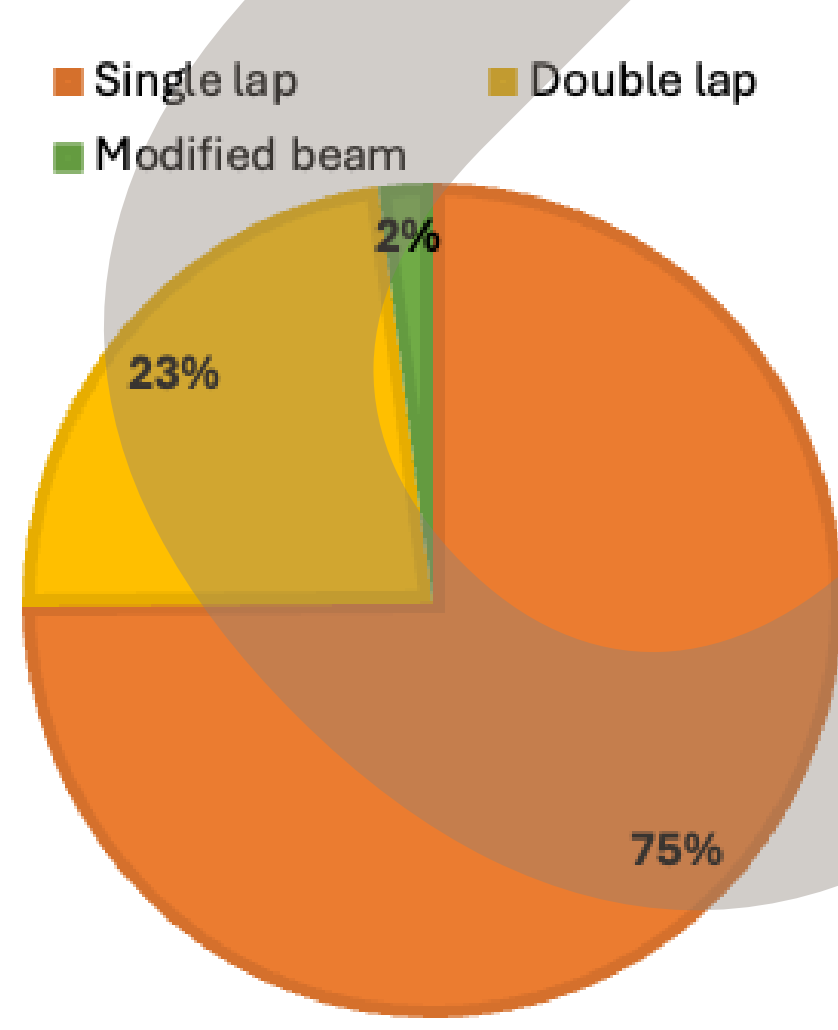
Aderenza su elementi in muratura

M.A. Aiello, F. Ceroni, L. La Mendola, M. Leone, G.P. Lignola, M. C. Oddo, A. Prota

Bond test data-base (2011-2022)



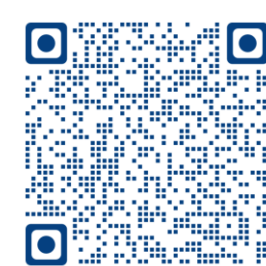
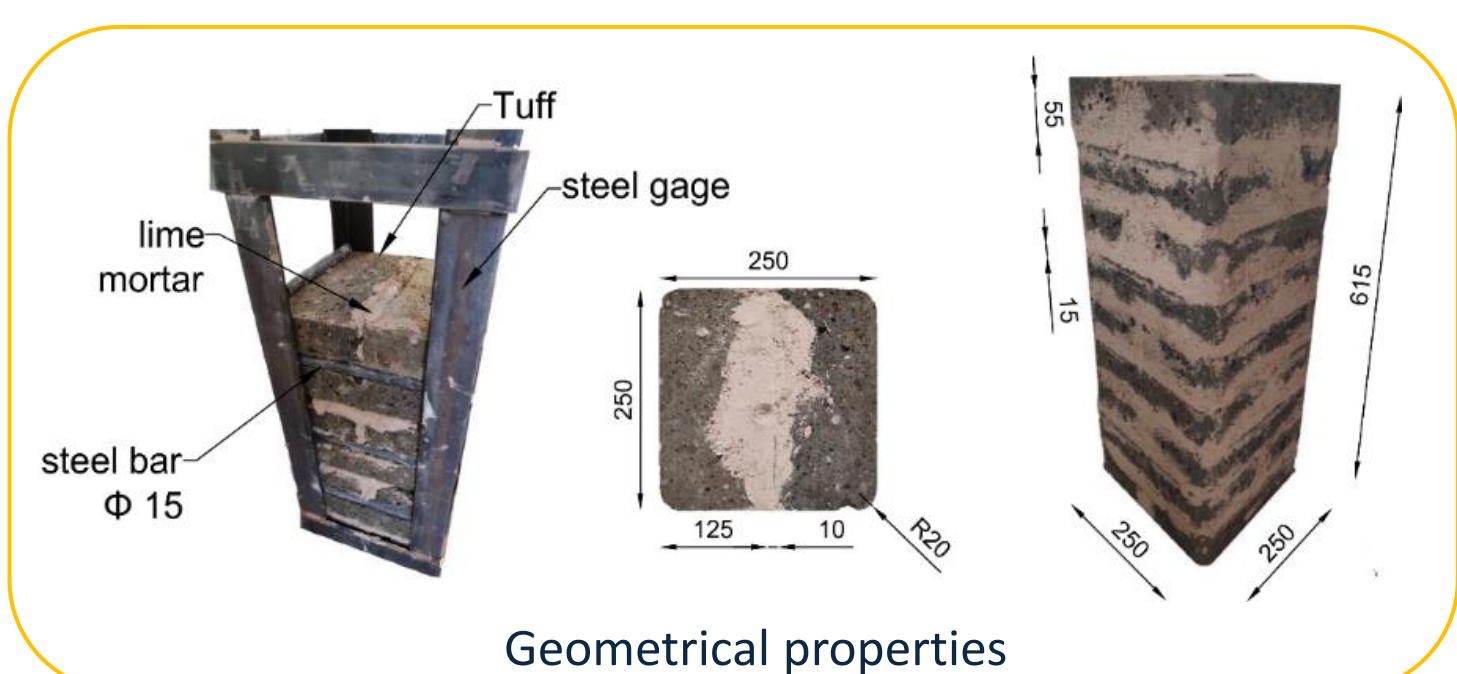
New experimental bond tests
single lap set-up



Confinamento di colonne in muratura e rinforzo a taglio di pannelli in muratura

M.A. Aiello, A. Cascardi, F. Ceroni, L. La Mendola, G.P. Lignola, M. C. Oddo, A. Prota

Experimental tests on tuff masonry columns confined with glass-FRCM



Experimental set-up for shear compression tests

